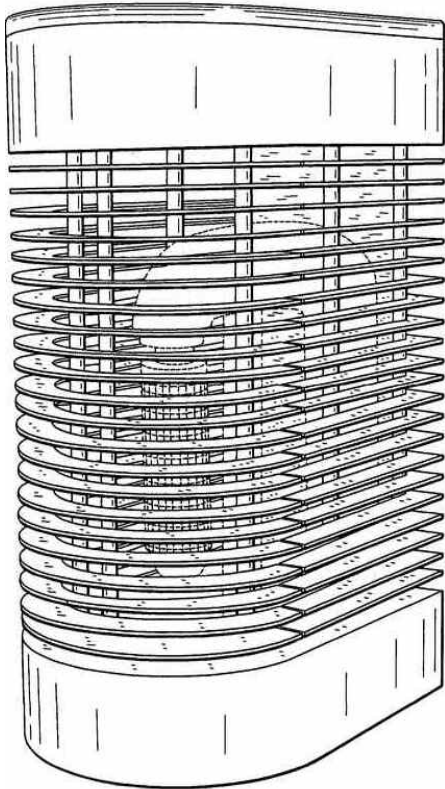


TORREFIRE

FREESTANDING

PELLET STOVE



13.1.3.1

PLEASE READ THIS ENTIRE MANUAL
BEFORE USE OF THIS PELLET-FUEL
BURNING ROOM HEATER. FAILURE TO
FOLLOW THESE INSTRUCTIONS COULD
RESULT IN PROPERTY DAMAGE,
BODILY INJURY OR EVEN DEATH.

13.1.3.3

Save these instructions



INSTALLATION AND OPERATING INSTRUCTIONS

Model 0.1

13.1.3.2 Contact local building or fire officials about restrictions and installation inspection requirements in your area

13.1.2 Torrefire Stoves

25230 Northeast 52nd Place Redmond, Washington 98053 Telephone 425-442-9444

<http://www.Torrefirestoves.com>

Torrefire

Pellet Stove .01

Operating Instructions

OWNERS RECORD

The serial number and model number is located on the inside cover of the pellet hopper lid.

Record the serial number in the space provided below. Refer to these numbers whenever communicating with Firelight Stoves, Inc. Regarding this product.

Model .01 Serial No. -----

Torrefire Wood Pellet Stove .01

Pellet Stove .01

The method of identifying a stove, is by use of code the numbers shown below. The stove number will be found stamped into the heat exchanger on the forward top section of the exchanger, and is also found on the data plate on the inside cover of the pellet hopper.

2013.1	Represent year and month of manufacture.
0001	Represents the unit (stove) number
A	Represents the model.
O	Represents the type
74	Represents the trim

As there are several different model types within our production control, the following codes will be used for correct model identification:

Torrefire Wood Pellet Stove O

Torrefactor Self Torrefied Wood Pellet Stove T

Standard Hardware and Part Numbers

All standard finish Bolts, Screws, Studs, Nuts, and Washers carry either Part Numbers in accordance with the code given or numbers as listed in the Replacement Parts Price List.

Commencing Stove Number: (0001)

2014.1-00001-O .01 Torrefire Wood Pellet stove

The designations 'LEFT' and 'RIGHT' are to be understood as seen front facing the stove.

Torrefire Wood Pellet Stove .01

Pellet Stove .01

Assembly and Sub-assembly piece parts are listed under the Assembly/Sub-assembly description and part numbers are given for obtainable piece parts, For easier identification, fixings (e.g. Bolts, Nuts, Pins, etc.) for replacement parts are also listed.

Inset under the parts description. These fixings are NOT supplied with the replacement part and must be ordered separately as required. The term 'optional' in the 'DESCRIPTION' column indicates the respective parts will be supplied as requested or available where necessary. 'CHANGE POINT', (i.e. HEAT EXCHANGER, TRIM, HOPPER Nos.) will be indicated in the 'CHANGE POINT' column.

The applicability of parts to stove variants together with the total quantity fitted per variant, is given in the Quantity Columns under the appropriate heading, and where applicable, by a star Annotation column. All parts do not necessarily correspond to the illustrations. The following abbreviations are used in the parts list:

L/H - Left Hand, R/H - Right Hand, C/W Complete With,

CONDITION OF SALE AND WARRANTY

We reserve the right to make changes or improvements to the construction of our products at any time. It is our general policy. However, to supply components to the latest specification.

DELIVERY

Any date quoted for delivery is an estimate and under no circumstances shall the company be liable for delay in delivery, howsoever occurring.

PRICE

Goods purchased will be supplied at the price ruling at the date of delivery. Firelight Stoves, Inc, reserve the right to alter prices without previous notice. All prices are ex-factory, packing and carriage extra.

Pellet Stove .01

PAYMENT

Terms of payment are strictly CASH ON DELIVERY.

CORRESPONDENCE:

All correspondence relating to parts must carry both the order number and the invoice number.

PART NUMBERS:

Part numbers must always be quoted on all correspondence. Advice notes and parts order forms.

LIABILITY:

The Company's liability is limited as set out below, any implied condition or warranty is hereby excluded, and the Company will not be liable in damages for any injury or loss; damage or expense howsoever incurred or arising in connection with goods ordered hereunder.

CLAIMS UNDER WARRANTY:

Claims for the replacement of material or parts under Warranty must always be submitted to the supplying distributor for the area concerned. All faulty material in the United States must be correctly labeled and returned to Firelight Stoves, Inc. For all other territories faulty material must be held by the supplying distributor pending settlement of the claim. The factory Will NOT accept charges for the return of such parts or the packing or crating of the same. In all cases of claims under Warranty, the decision of Firelight Stoves, Inc. is final.

1. No claim under warranty will be accepted by the Company if after delivery:

(a,) Goods have been used for any other purpose, than originally designed.

Pellet Stove .01

SERVICE PARTS LIST

Example

Part Required - Combustion Capsule for Torrefire .01 Pellet Stove

Section - (C)

Model Number (A)

Type - (B)

Trim - (E)

Part Number - (D)

(C) (A) (B) (E) (C)

Section	Part Number	Quantity	LH	RH	Unit #	Description
C	A O 74-C-0001	1			2014.1	Combustion Capsule Assy

Instructions on ordering.

1. Determine the exact model number for which parts are required and obtain the serial number of the stove.
2. Refer to the index and select section (s) for which parts (s) are required.
3. Study the illustration and select reference number (s)
4. Relate the Reference number to the number of part (s) list
5. Read across from the Reference number to the appropriate QUANTITY Column Number
6. Read the DESCRIPTION Column for correct order identification.

Pellet Stove .01

DAMAGED PARTS

Damage to received parts should be assumed to have occurred in transit, and claims should be made to the carriers and/or their insurance company. Parts will not be accepted for credit unless previously agreed. Carriage of parts returned will be at purchaser's expense, unless previously agreed.

VARIATION

No variation from these conditions or this warranty shall be binding upon the company unless in writing signed by a Director on behalf of Firelight Stoves. Inc.

1.

The Company will during the warranty period of THREE MONTHS at their option, repair or replace free of charge to the purchaser any part which in their opinion is defective owing to faulty workmanship or materials, the cost of carriage and labor costs incurred in dismantling or reassembly shall be charged to the purchaser.

2.

Where the Warranty period is THREE MONTHS, the Company will within the remaining period of the original three months from the date of supply, repair or replace on the terms of the foregoing clause any part supplied under that clause which in the Company's opinion is defective owing to faulty materials or workmanship.

3.

The company's undertaking to repair or replace applies ONLY to parts of Firelight design. That is, parts manufactured by, or to the specification of the Firelight Stoves Company. The Company will be under no legal liability in respect of parts not of Firelight design but will, during the Warranty period, at the request of the purchaser (who will reimburse the Company for any expense incurred) take reasonable steps to secure the repair or replacement by the manufacturer of any such part, which may be defective.

4.

Should the Company in their discretion carry out work or supply any extra parts free of charge, they shall be under no legal liability of any kind in connection herewith, and the provisions of the warranty shall not be deemed in any way to have been waived.

Pellet Stove .01

SERVICE PARTS LIST

Section A:

- AO74-A-10000 assembly capsule
- (1) AO74-A-10001 air conduit top
- (1) AO74-A-10002 air conduit bottom
- AO74-A-10003
- AO74-A-10004
- AO74-A-10005

Section B:

- (2) AO74-B-20000 bolt trim 30"
- (2) AO74-B-20001 bolt trim 34"
- (3) AO74-B-20002 bolt door level
- AO74-B-20003
- AO74-B-20004

Section C:

- AO74-C-30000 clamp marmon 2.5
- AO74-C-30001 clamp marmon 4.0
- AO74-C-30002
- AO74-C-30003
- AO74-C-30004
- AO74-C-30005
- AO74-C-30006

Section D:

- AO74-D-40000
- (1) AO74-D-40001 door assembly
- (150) AO74-D-40002 dowel spacer standard
- AO74-D-40003 dowel spacer large hole
- AO74-D-40004 door base plate
- AO74-D-40005 door alignment pin
- AO74-D-40006
- AO74-D-40007
- AO74-D-40008
- AO74-D-40009

Section E:

- AO74-E-50000 exchanger heat
- AO74-E-50001
- AO74-E-50002
- AO74-E-50003

Section F:

- AO74-F-60000 flange combustion
- AO74-F-60001 fan exhaust internal
- AO74-F-60002
- AO74-F-60003
- AO74-F-60004
- AO74-F-60005
- AO74-F-60006
- AO74-F-60007

:

Section G

- AO74-G-70000 grate fire pot
- AO74-G-70001 gasket exhaust
- AO74-G-70002
- AO74-G-70003
- AO74-G-70004
- AO74-G-70005
- AO74-G-70006
- AO74-G-70007

Section H

- AO74-H-80000 hopper pellet
- AO74-H-80001
- AO74-H-80002
- AO74-H-80003
- AO74-H-80004
- AO74-H-80005
- AO74-H-80006

Pellet Stove .01

Section I

AO74-I-90000
AO74-I-90001
AO74-I-90002
AO74-I-90003
AO74-I-90004
AO74-I-90005
AO74-I-90006
AO74-I-90007
AO74-I-90008

Section J

AO74-J-10000
AO74-J-10001
AO74-J-10002
AO74-J-10003
AO74-J-10004
AO74-J-10005
AO74-J-10006
AO74-J-10007
AO74-J-10008

Section K

AO74-K-11000
AO74-K-11001
AO74-K-11002
AO74-K-11003
AO74-K-11004
AO74-K-11005
AO74-K-11006
AO74-K-11007
AO74-K-11008

Section L:

AO74-L-12000 louver short U
AO74-L-12001 louver long U
AO74-L-12002 louver attachment
AO74-L-12003
AO74-L-12004
AO74-L-12005
AO74-L-12006
AO74-L-12007
AO74-L-12008

Section M

AO74-M-130000
AO74-M-130001
AO74-M-130002
AO74-M-130003
AO74-M-130004
AO74-M-130005
AO74-M-130006
AO74-M-130007
AO74-M-130008

Section N

AO74-N-14000 nut pipe exhaust
AO74-N-14001 nut shaft capsule
AO74-N-14002
AO74-N-14003
AO74-N-14004
AO74-N-14005
AO74-N-14006
AO74-N-14007
AO74-N-14008

Section O:

AO74-O-15000
AO74-O-15001
AO74-O-15002
AO74-O-15003
AO74-O-15004
AO74-O-15005
AO74-O-15006
AO74-O-15007
AO74-O-15008

Section P:

AO74-P-16000 plate base
AO74-P-16001 pipe exhaust external
AO74-P-16002 pin alignment
AO74-P-16003 pot fire
AO74-P-16004
AO74-P-16005
AO74-P-16006
AO74-P-16007

Pellet Stove .01

Section Q

AO74-Q-17000 Quartz glass

AO74-Q-17001

AO74-Q-17002

AO74-Q-17003

AO74-Q-17004

AO74-Q-17005

AO74-Q-70006

AO74-Q-17007

AO74-Q-17008

Section R

AO74-R-18000 ring capsule

AO74-R-18001 ring spacer

AO74-R-18003 reducer orifice

AO74-R-18004

AO74-R-18005

AO74-R-18006

Section S 19000

AO74-S-19000 shaft trim 30"

AO74-S-19001 shaft trim 34"

AO74-S-19002 shaft trim hollow

AO74-S-19003 shaft trim

AO74-S-19004 screen wire

AO74-S-19005 shaft capsule

AO74-S-19006 sensor temperature

AO74-S-19007 shield (a) heat

Section T 20000

AO74-T-20000

AO74-T-20001

AO74-T-20002

AO74-T-20003

AO74-T-20004

AO74-T-20005

Section U 21000

AO74-U-21001

AO74-U-21002

AO74-U-21003

AO74-U-21004

AO74-U-21005

AO74-U-21006

AO74-U-21007

AO74-U-21008

Section V 22000

AO74-V-22001

AO74-V-22002

AO74-V-22003

AO74-V-22004

AO74-V-22005

AO74-V-22006

AO74-V-22007

AO74-V-22008

Section W 23000

AO74-W-23001

AO74-W-23002

AO74-W-23003

AO74-W-23004

AO74-W-23005

AO74-W-23006

AO74-W-23007

AO74-W-23008

Section X 24000

AO74-

AO74-

AO74-

AO74-

AO74-

AO74-

Pellet Stove .01

For the customers in the United States INFORMATION

This equipment has been tested and found to comply with the ASTM 04 E1509 - 12 Standard Specification for Room Heaters, Pellet Fuel-Burning Type 1 this specification is designed to provide reasonable safety protection in a residential installation.

This equipment generates and radiates infra-red energy heat energy and if not installed and used in accordance to the instructions, may result in property damage, bodily injury or even death.

There is no warranty unless this equipment is installed by a qualified, licensed installer. The user is encouraged to:

- Orient or locate the stove in an open location.
- the separation between the stove and flammable materials is adhered to.
- connect the stove to an outlet on a circuit different from that to which other appliances are connected.
- Consult an experienced installer.

You are cautioned that any changes or modifications not expressly approved in this manual could void your warranty. If you have any questions about this product, you may call: Firelight Customer Information Services Center 1-800-xxx-1234
<http://www.firelightstoves.com>

GENERAL INFORMATION

1. The .01 is a Radiant Heat Pellet Stove. Do not place the /01 in an alcove.
2. Do not install in a mobile, or manufactured home.
3. Do not use “B” vent.
4. There are two (2) exhaust vent fan options Internal, and External:
 - a. Internal configuration utilizes four (4) inch “L” exhaust vent with the exhaust fan located in the stove interior.
 - b. External configuration utilizes four (4) inch “L” exhaust vent with the exhaust fan located at the distal end of all exhaust vent configurations.
5. Ash clean out is achieved by pressurized air. There are four (4) clean out ports located at strategic points two (2) in the front of the heat exchanger, and two (2) in the ash box.

Model .01 Comes in two (2) main separable components, and four (4) sub-assembly components. Heat Exchanger, Pellet Hopper, Air Tube, Combustion Capsule, Fire Pot, Door.

Pellet Stove .011

Notice for users

Documentation ©2014 Torrefire Stoves

All rights reserved. This manual in whole or in part, may not be reproduced, translated or reduced to any machine-readable form without prior written approval from Firelight Stoves, Inc.

IN NO EVENT SHALL TORREFIRE STOVES, INCORPORATED BE LIABLE FOR ANY INCIDENTAL, CONSEQUENTIAL OR SPECIAL DAMAGES, WHETHER BASED ON TORT, CONTRACT, OR OTHERWISE, ARISING OUT OF OR IN CONNECTION WITH THIS MANUAL, OR OTHER INFORMATION CONTAINED HEREIN OR THE USE THEREOF.

Torrefire Stoves, Inc reserves the right to make any modification to this manual or the information contained herein at any time without notice.

This equipment has been tested and found to comply with the ASTM 04 E1509 - 12 Standard Specification for Room Heaters, Pellet Fuel-Burning Type 1 this specification is designed to provide reasonable safety protection in a residential installation.

This equipment generates and radiates infra-red heat energy and if not installed and used in accordance with the instructions, may result in property damage, bodily injury or even death.

There is no warranty unless this equipment is installed by a qualified, licensed installer. The user is encouraged to:

- Orient or locate the stove in an open location.
- the separation between the stove and flammable materials is adhered to.
- connect the stove to an outlet on a circuit different from that to which other appliances are connected.
- Consult an experienced installer.

You are cautioned that any changes or modifications not expressly approved in this manual could void your warranty. If you have any questions about this product, you may call: Firelight Customer Information Services Center 1-800-xxx-1234
<http://www.torrefirestoves.com>

Pellet Stove .01

Table of Contents

Getting Started.....

 Step 1: Installing the Stove.....

Pellet Stove .01

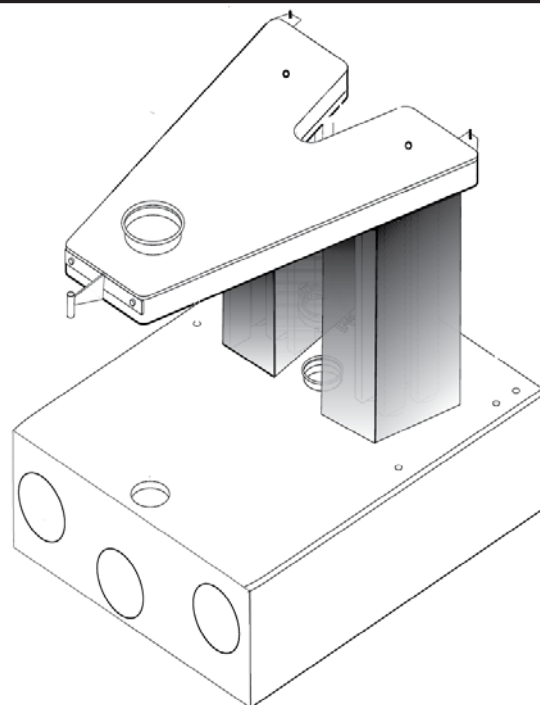
Getting Started

13.2. 2

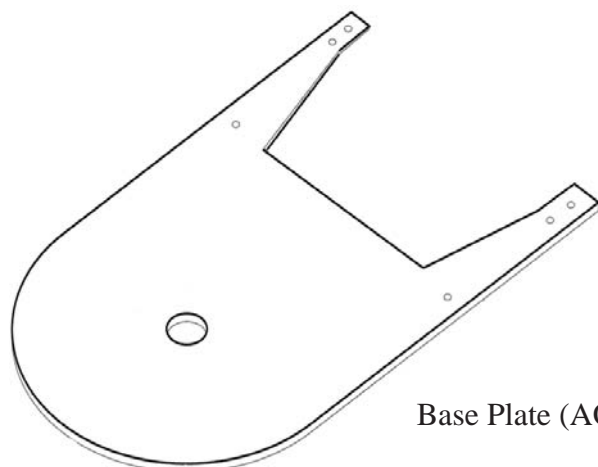
Stove Assembly

1 Remove stove parts from the shipping cartons.

2 Place the HEAT EXCHANGER (A0-74-H-50000) on a non combustible pad. (Pad not shown)

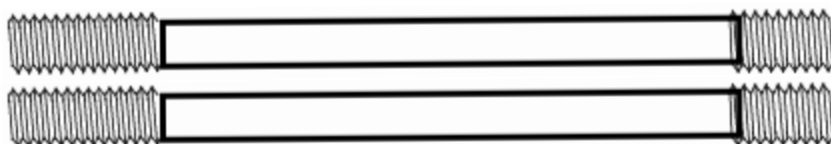


Heat Exchanger (A074-H-50000)

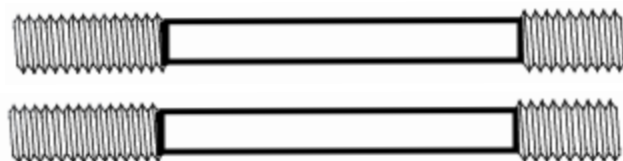


Base Plate (AO74-P-16000)

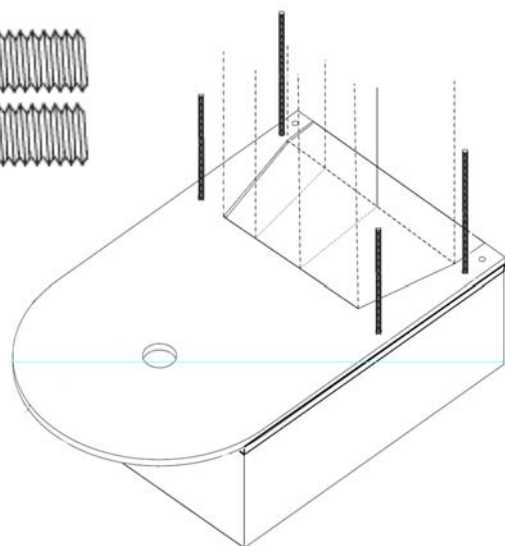
3 Place the BASE PLATE (AO74-P-16000) on the top of the ash box, continue by threading two (2) 30" TRIM BOLTS (AO74-B-20000) in the forward two (2) holes. and then threading two (2) 34" TRIM BOLTS (AO74-B-20003) in the next rearward holes. Using antisieze compound on the threads tighten down, and then back off 1/2 a turn.



34" TRIM BOLTS (AO74-B-20001)



30" TRIM BOLTS (AO74-B-20000)



Pellet Stove .01

Getting Started (continued)

Stove Assembly

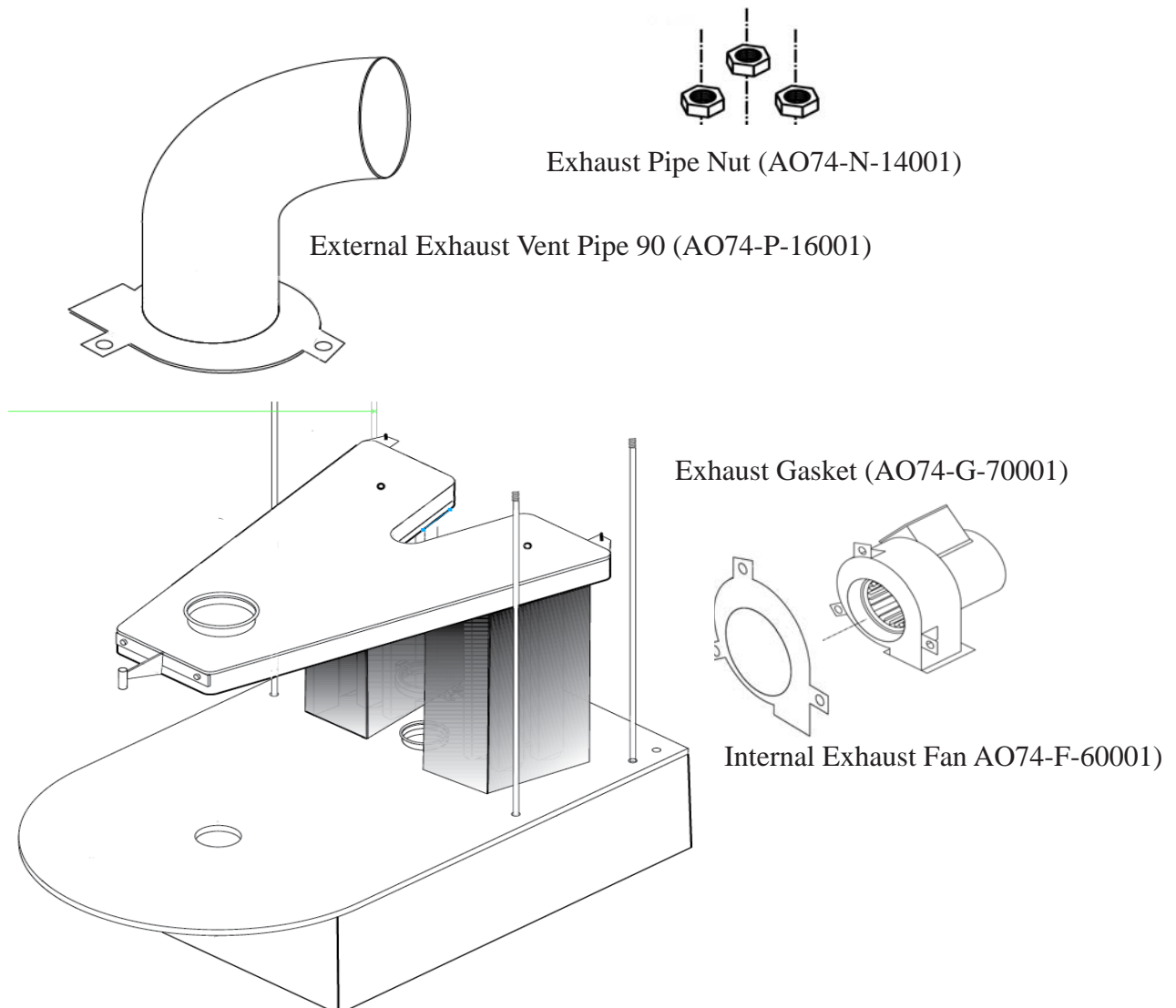
4 EXHAUST VENT FAN:

Internal:

Use three (3) 1/4 " X 20 National coarse nuts to attach the exhaust fan assembly to the Heat Exchanger, utilizing EXHAUST FAN GASKET (AO-74-G-70001).

External:

When using EXTERNAL FAN attach EXHAUST PIPE 90 (AO74-P-16001) instead of the Exhaust Vent Fan.



Pellet Stove .01

Getting Started

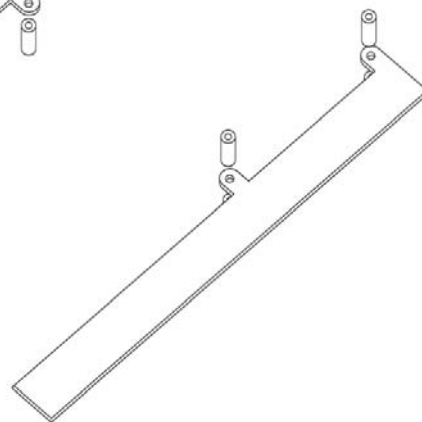
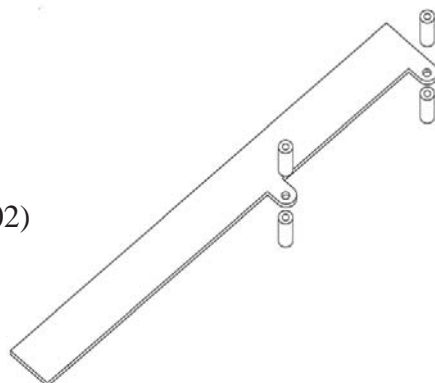
Stove Assembly (continued)

5 SHORT STRAIGHT TRIM

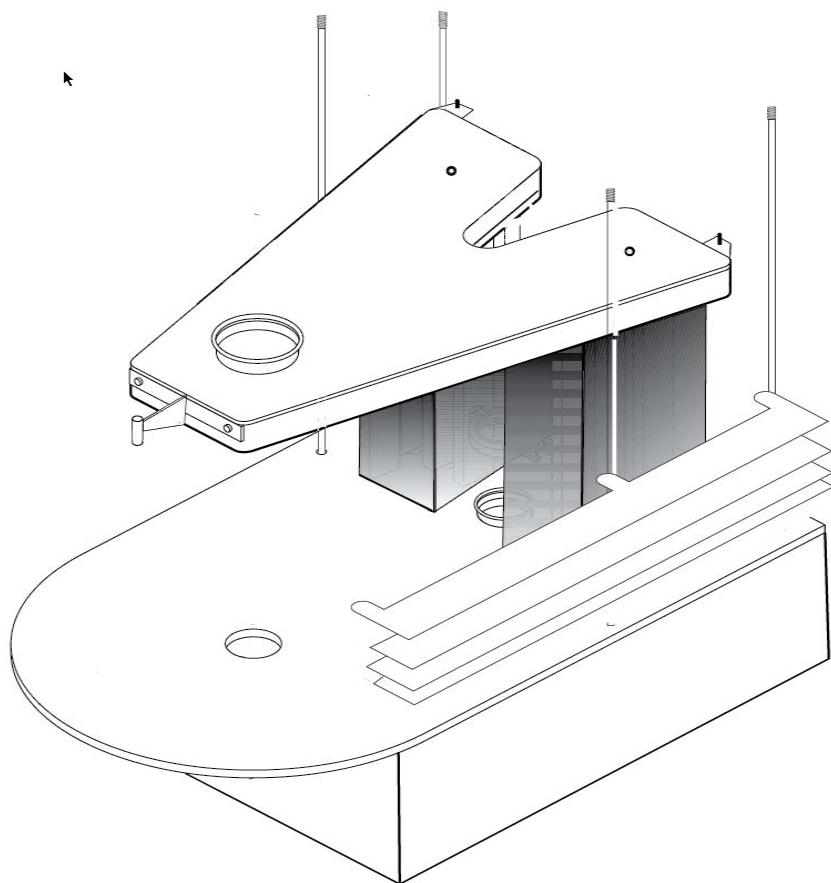
Place four (4) SPACER DOWLES (AO74-D-40002) one (1) each on the four (4) vertical Trim Bolts. Continue by placing one (1) SHORT STRAIGHT TRIM (AO74-T-60001) piece on each side of the stove followed by two (2) Spacer Dowles. Place Spacer Dowles and four (4) Short Trim pieces on each side evenly.



Spacer Dowle (AO74-D-40002)



Straight Trim (AO74-T-60001)



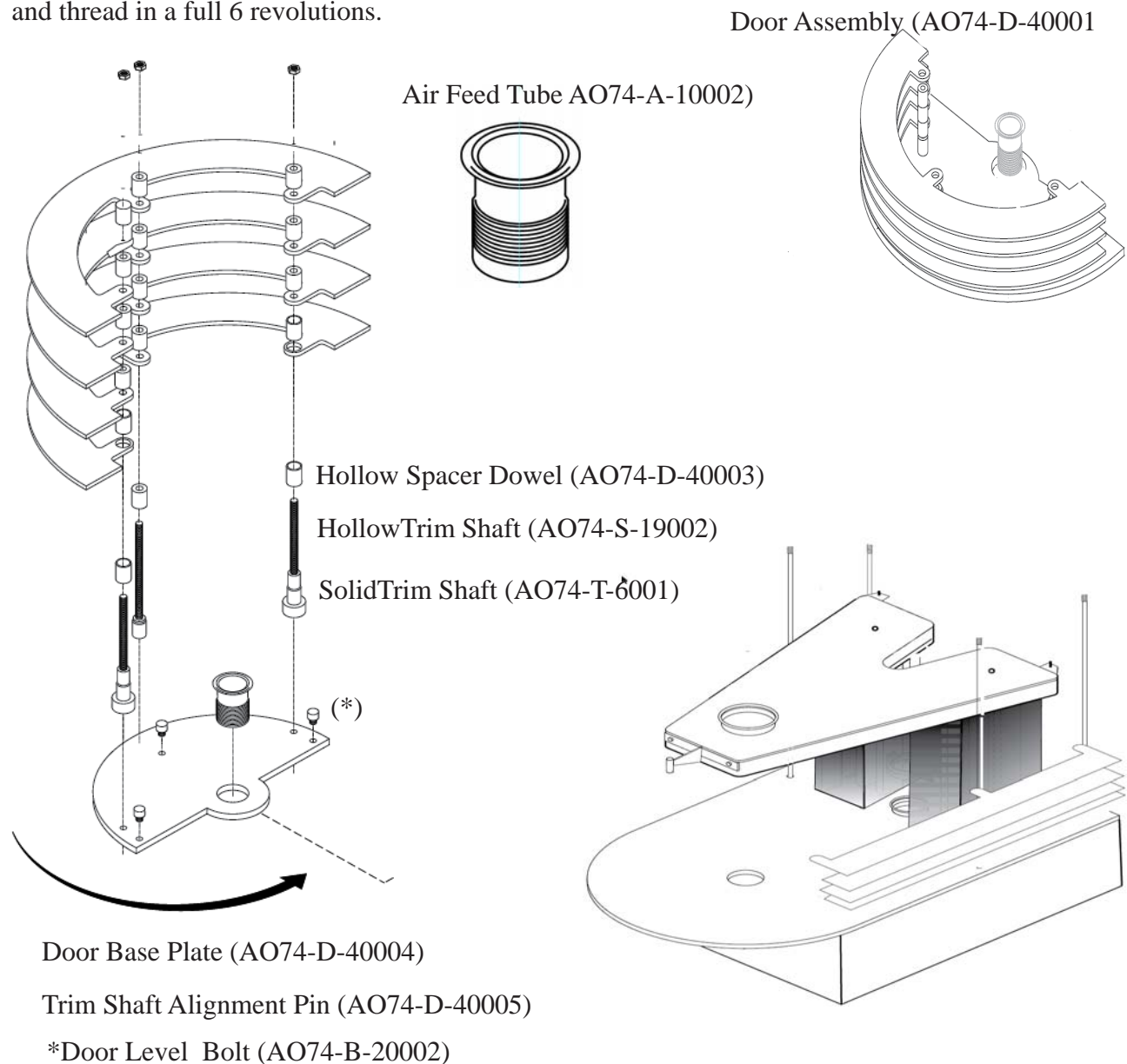
Pellet Stove .01

Getting Started

Stove Assembly (continued)

DOOR:

Place two (2) HOLLOW TRIM SHAFTS (AO74-S-19002) over two (2) ALIGNMENT PINS, (AO74-P-16002) then install four (4) SHORT U-TRIM LOUVERS (AO74-L-12000) on the HOLLOW TRIM SHAFTS using two (2) (AO74-D-40003) SPACER DOWELS on the first level. Then place the door on top of the trim base plate aligning the pivot hole with the bottom air intake hole, place the threaded BOTTOM AIR FEED TUBE (AO74-A-100002) through the pivot hole and thread in a full 6 revolutions.

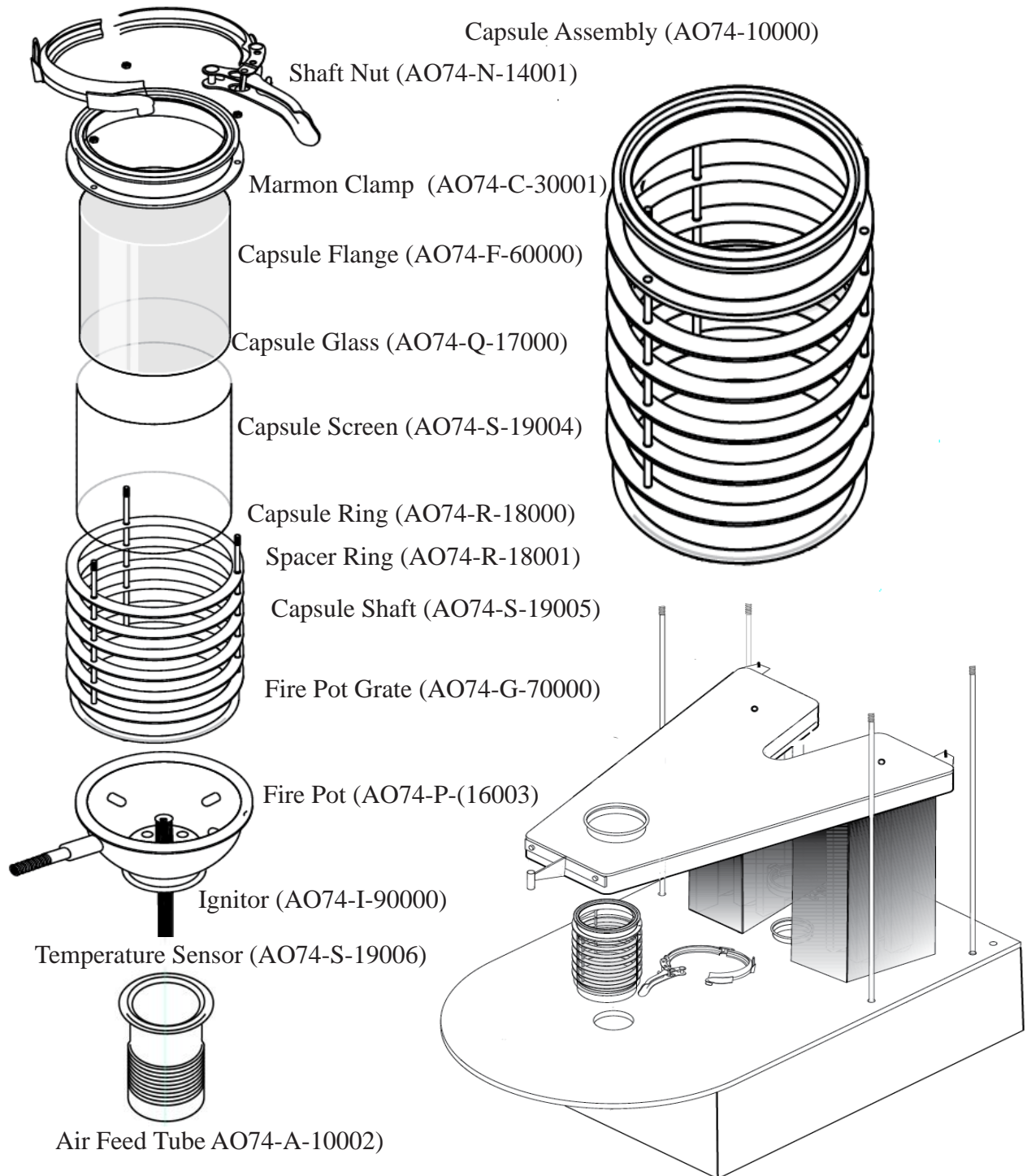


Pellet Stove .01

Getting Started

Step 1: Stove Assembly (continued)

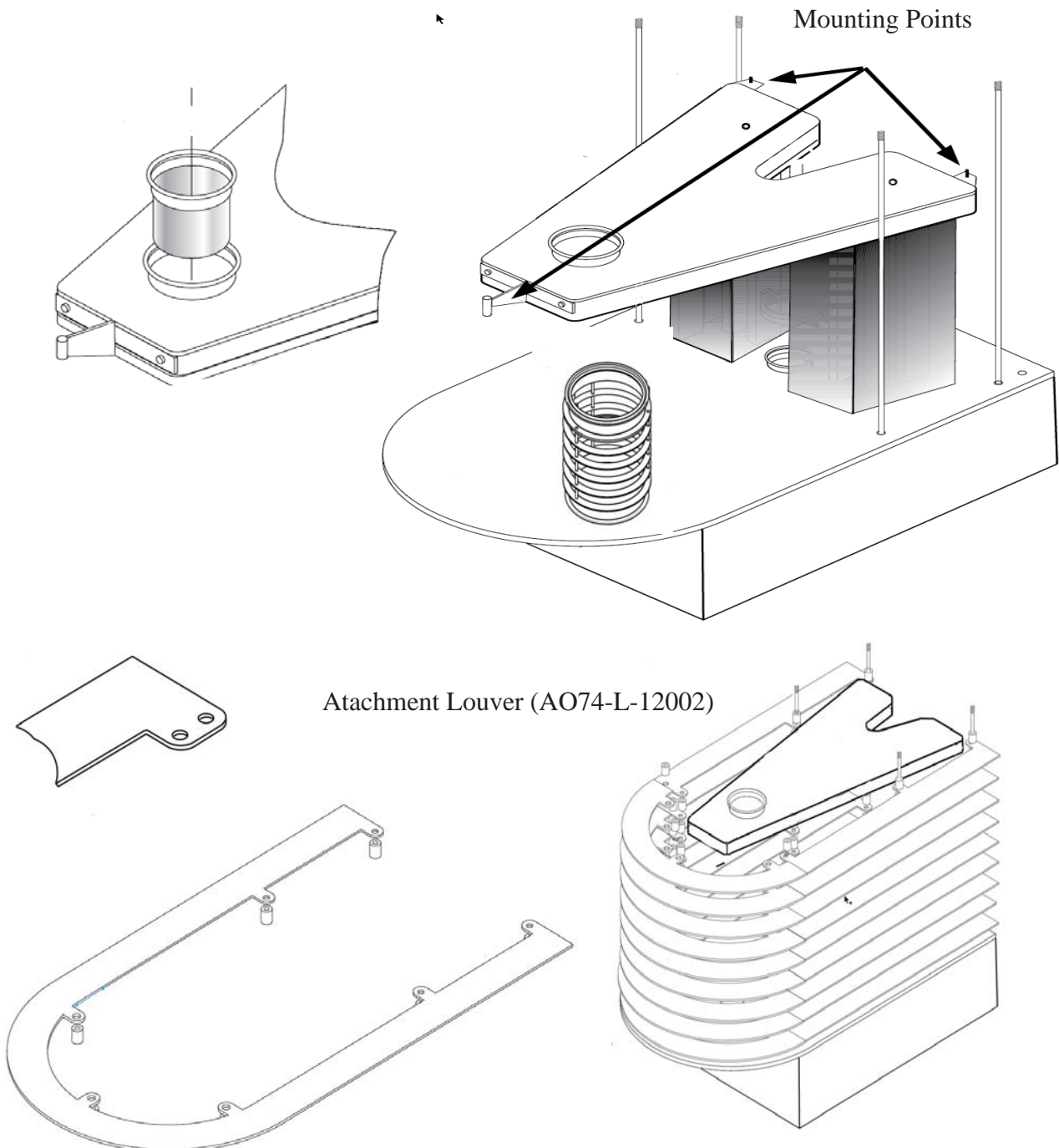
8 Attach the COMBUSTION CAPSULE to the Heat Exchanger with the 4" Marmon Clamp (AO74-C-3000)



Pellet Stove .01

Getting Started (continued)

- 7 Once four (4) short straight and four (4) LONG U-LOUVERS have been installed, place the u-trim with the extra attachment holes (AO74-L-120010) on the stack and firmly attach the stack to the heat exchanger mounting points.

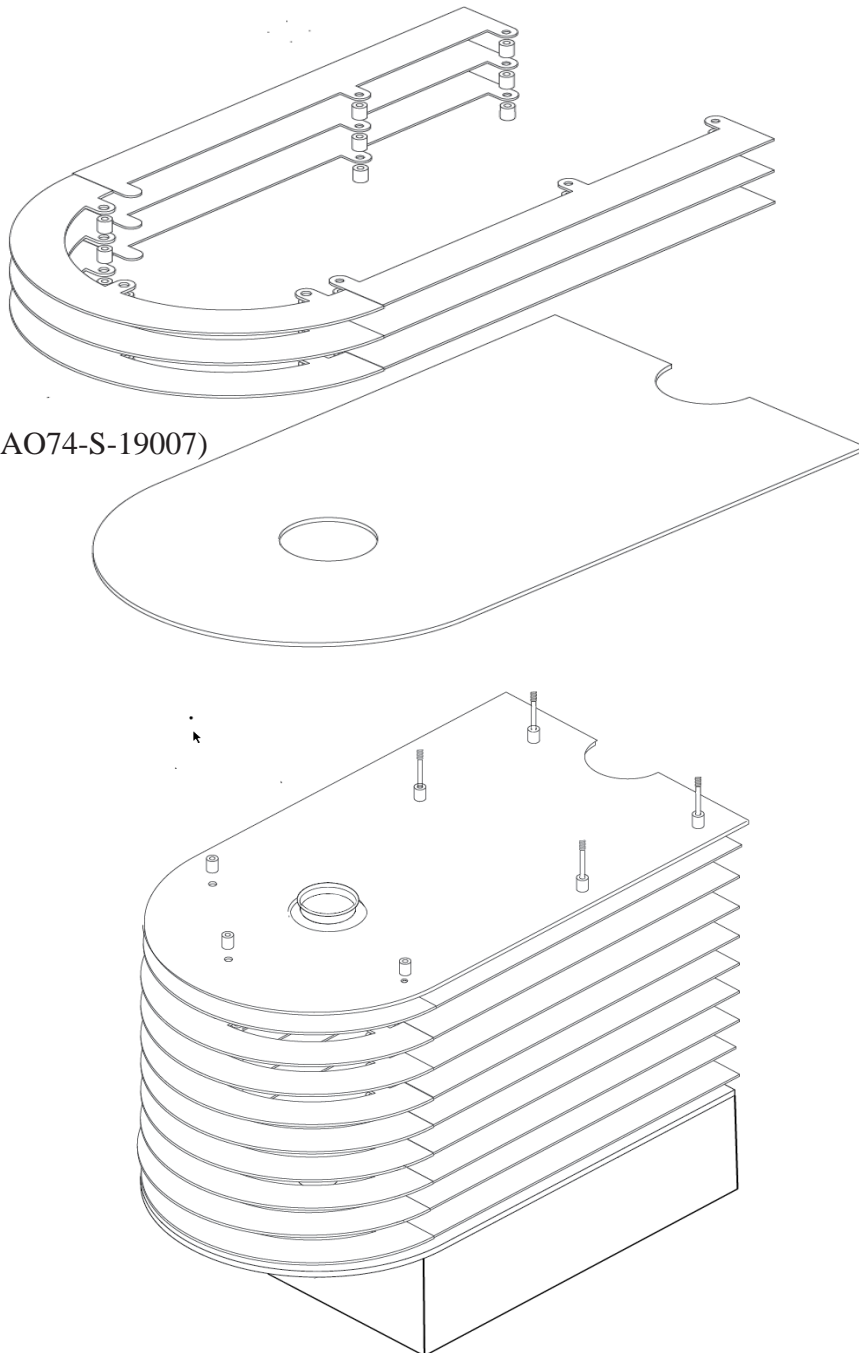


Pellet Stove .01

Getting Started (continued)

- 8 Then place HEAT SHEILD-A (AO74-S-19007) on the stack and add three (3) more U-Trim to the stack.

Heat Shield-A (AO74-S-19007)

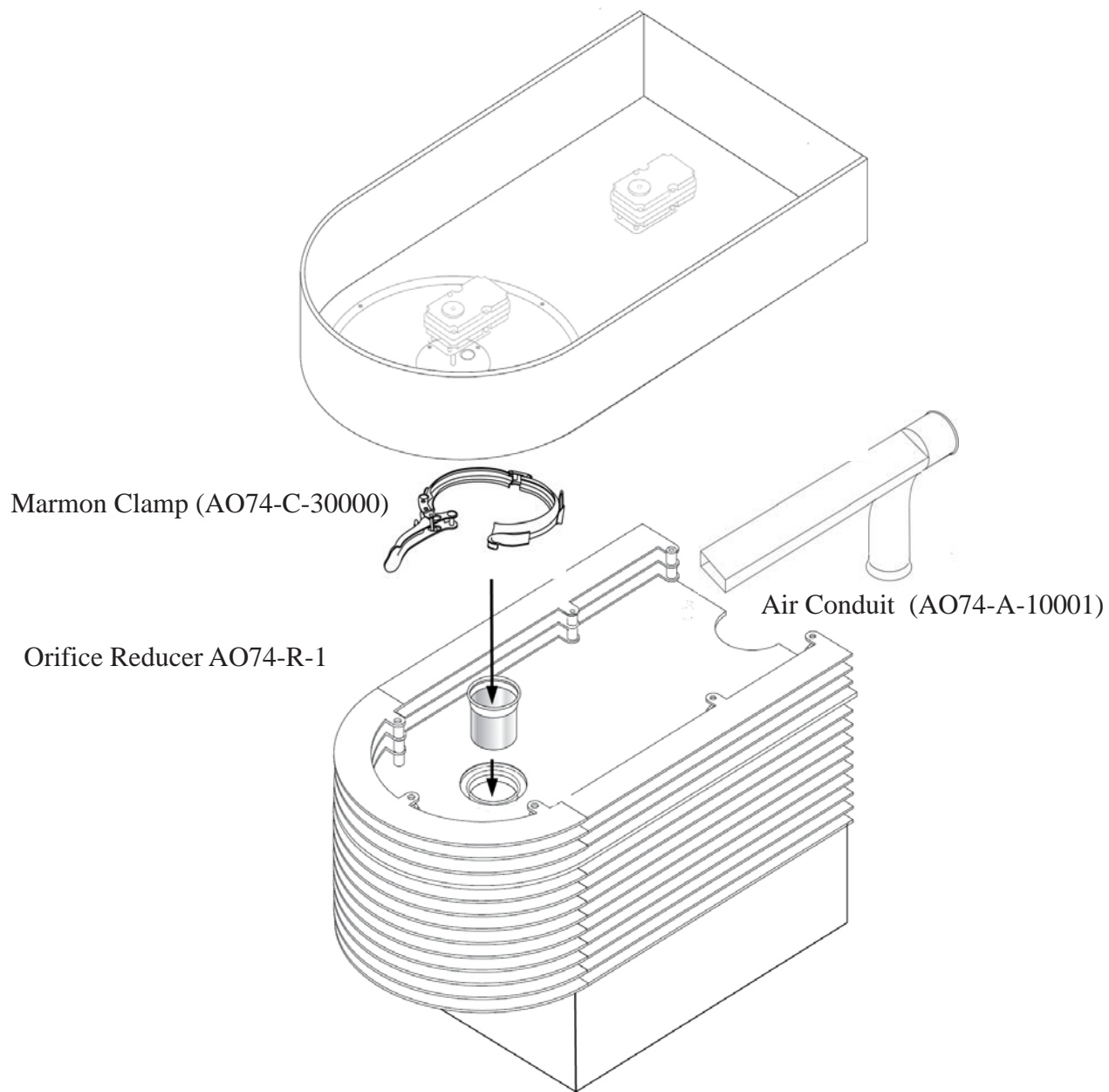


Pellet Stove .01

Getting Started (continued)

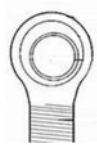
- 9 Place the hopper on top of the stove attaching the Marman clamp to the pellet feed tube and the air intake tube, and two (2) 1/2" nuts onto the rearmost trim shafts.

Pellet Hopper Assembly(A074-H-80000) Assembly

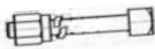


Pellet Stove .01

21, Attach the hopper hinge HEIM JOINT (AO-74-H-0000) to the rear underside of the hopper. Using two HINGE BOLTS (AO-74-B-0000) and HINGE NUTS AO-74-N-0000 Attach the HOPPER HINGE PLATE to the hinge heim joints using two (2) AO-74-B-0000 bolts & nuts.



AO-74-H-0000
Hinge



AO-74-B-0000 Bolt



AO-74-Z-0000 Nut



AO-74-B-0000 Bolt



AO-74-Z-0000 Dzus

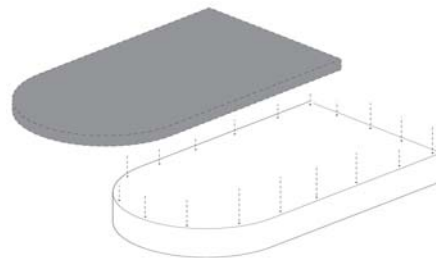


'4-S-0000

23. Using two (2) AO-74-B-0000 bolts and two (AO-74-N-0000) nuts mount two (2) GAS STRUTS AO-74-S-0000 to the hopper, one (1) on each side.



(AO-74-S-0000)

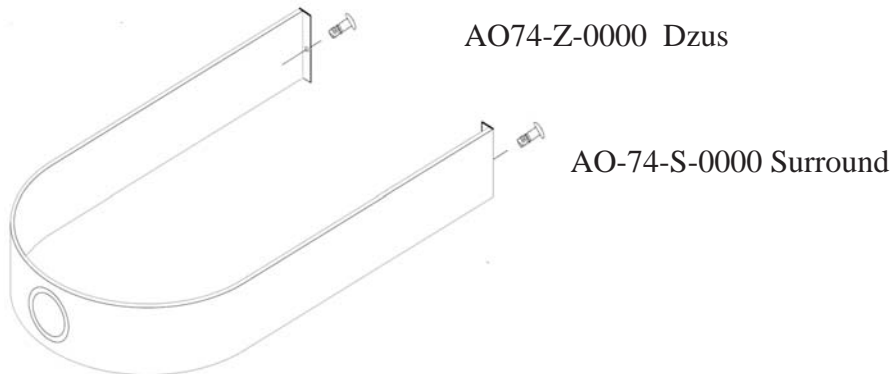


22. Attach two (2) GAS STRUTS (AO-74-S-0000) to each side of thr hopper tub, and to the attach points inside the hopper lid.

23. Using eighteen (18) (AO-74-S-0000) screws, attach STOVE LID AO-74-L-000 to the pellet hopper.

Pellet Stove .01

24, Mount the BOTTOM SURROUND in place using two (2) dzsus fasteners AO-74-Z-0000



Combustion Fan

Torrefire .01 offers two choices for Combustion Fan placement:

1. Internal:

Internal-Combustion Fan placement is upon the top rear section of the ash box. It is fixed in place by three bolts and sealed by a thermal gasket. Electrical connection is made by a two (2) connector Molex plug. The Internal-Combustion Fan services all exhaust vent configurations.

2. External.

External Combustion Fan placement is made by mechanical vent pipe twist connection at the distal end of all exhaust vent configurations.

The Combustion Fan must be removed and cleaned every 4000 hours. For optimum stove performance and reliability Combustion Fan motor replacement is recommended every 20,000 hours.

Torrefire .01 Combustion Fan motor specifications:

Part number (AO74-F-0000)

CFM

Horse Power

Voltage

External Combustion Fan housing requires seasonal maintenance to remove soot and ash buildup. .

Part number (AO74-0000)

Exhaust Vent

black--whitfield

red-jamestown

blue-breckwell

pipe joints
three screws
approved liner for masonry

vent termination
termination cap
manufactured home chimney height requirements

distance between air intake and exhaust
air intake and exhaust above snow level
outside air intake size
air intake wall thickness
using
reline of existing chimney when using existing chimney
wall thimble
no b vent
seal connections
clean out t
using existing chimney for exhaust vent
Install for new chimney system
RTV, screws, foil tape
500f rtv 260 c
6 feet verticle
combustion air supply
EVL

Equivalent Vent Length (EVL)

Maximum horizontal pipe length twenty (20) feet.

Recommended vertical runs to be minimum of ten (10).

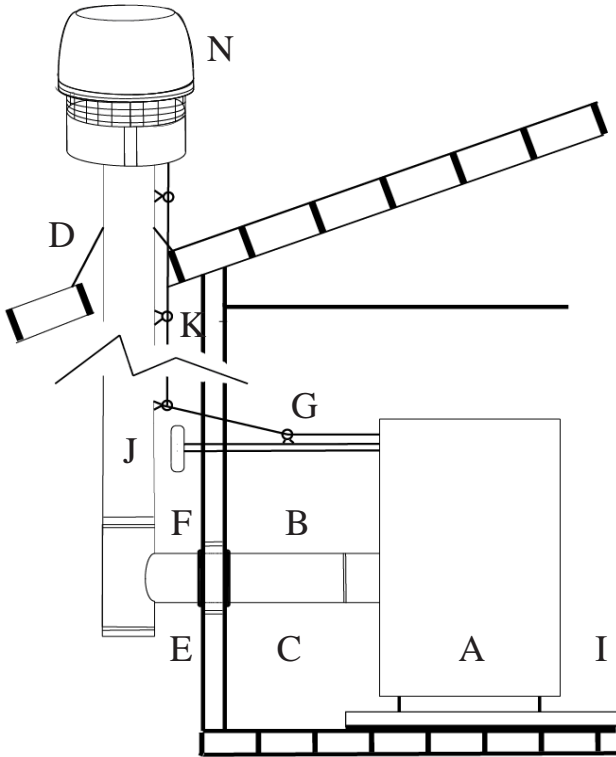
To calculate EVL, use the following conversions:

90° elbow or T = five (5) equivalent feet

45° elbow = three (3) equivalent feet

Horizontal exhaust vent length = one (1) equivalent foot

Vertical exhaustvent length = zero point five 0.5 equivalent foot

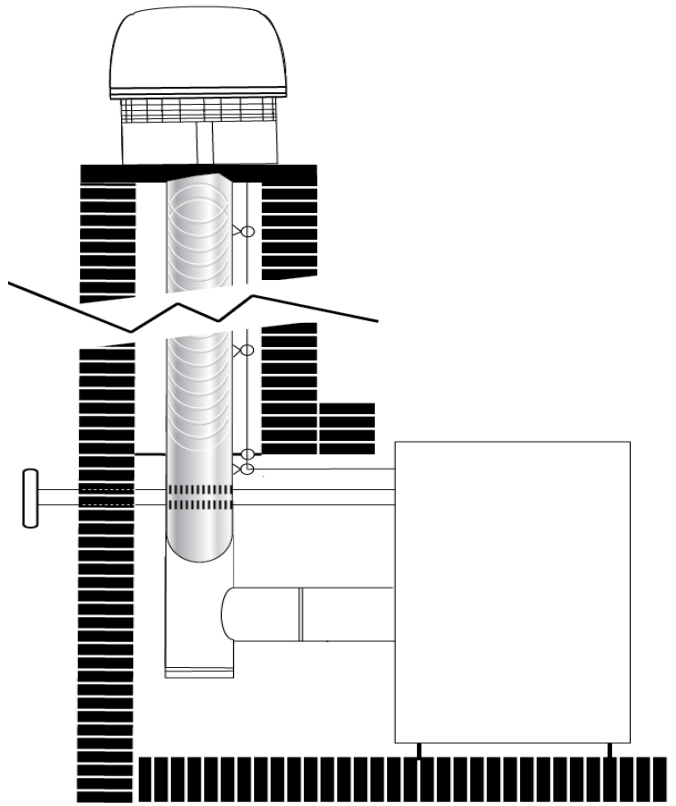


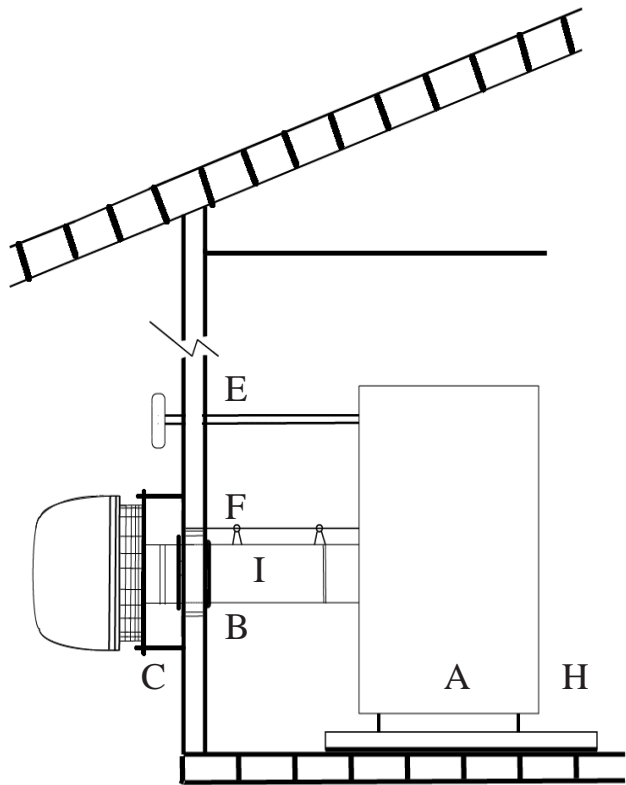
- A. Determine stove placement.
- B. Locate wall and roof vent holes.
- C. Install four (4) inch wall thimble.
- D. Install four (4) inch roof flashing
- D. Allow 3" clearance to combustibles.
- E. Provide four (4) inch cleanout T
- F. Locate two (2) inch outside air hole.
- G Locate exhaust fan power cable hole.
- H. Maintain five (5) foot clearance from doors, windows, trees, shrubs, and allow for snow pack.
- I. Provide non combustible pad under stove.
- J. Four (4) inch L-vent required
- K. Provide wall support for vent, and T
- L. Seal vent connections with high temperature silicone sealant.
- M. Three (3) self tapping sheet metal screws are required to secure each exhaust vent joint.
- N. Mount Exhaust Fan

A Outside

- A. Determine stove placement.
- B. Locate 2" outside air hole
- C. Install
- D. Install four (4) inch roof flashing
- D. Allow 3" clearance to combustibles.
- E. Provide four (4) inch cleanout T
- F. Locate two (2) inch outside air hole.
- G Locate exhaust fan power cable hole.
- H. Maintain five (5) foot clearance from doors, windows, trees, shrubs, and allow for snow pack.
- I. Provide non combustible pad under stove.
- J. Four (4) inch L-vent required
- K. Provide wall support for vent, and T
- L. Seal vent connections with high temperature silicone sealant.
- M. Three (3) self tapping sheet metal screws are required to secure each

B Masonry

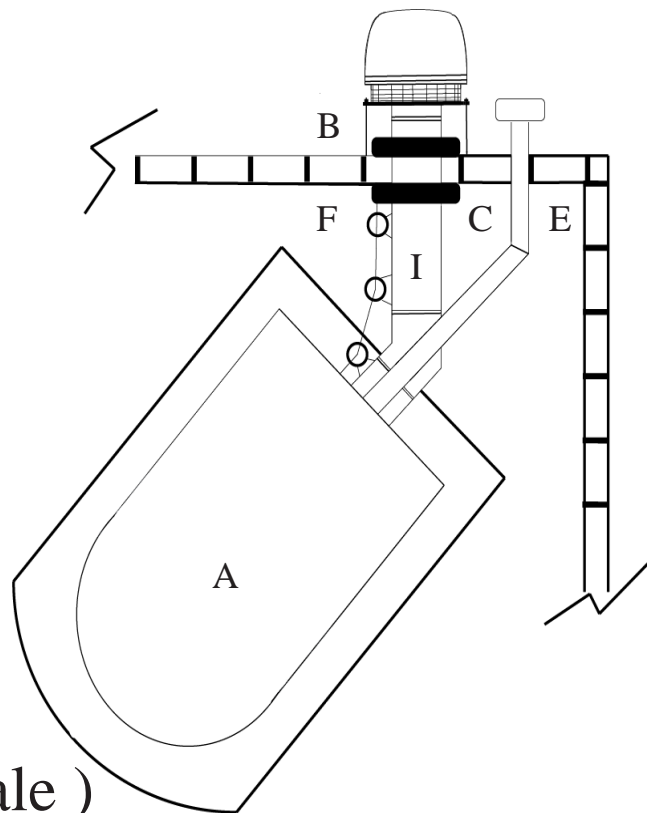




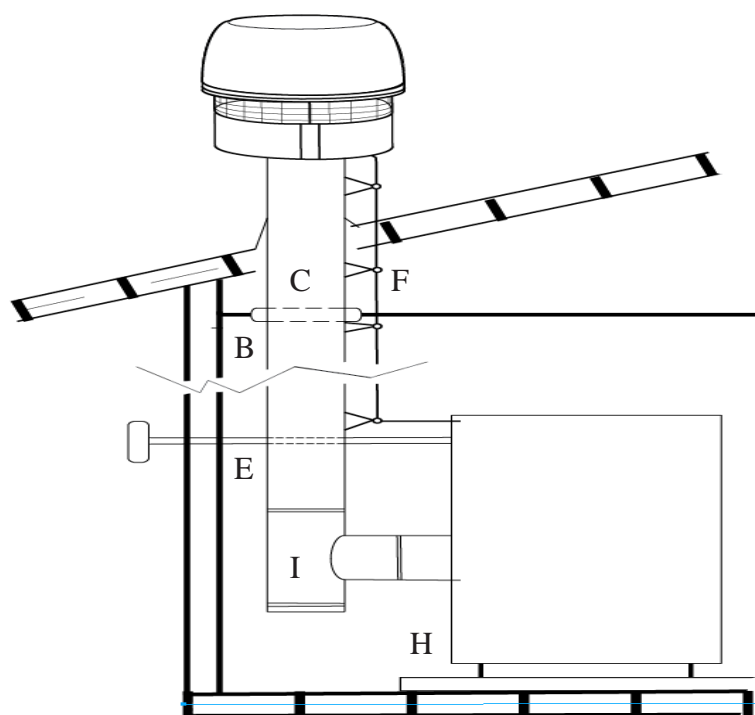
- A. Determine stove placement.
- B. Locate wall vent hole.
- C. Install four (4) inch wall thimble.
- D. Allow 3" clearance to combustibles.
- E. Locate two (2) inch outside air hole.
- F. Locate exhaust fan power cable hole.
- G. Maintain five (5) foot clearance from doors, windows, trees, shrubs, and allow for snow pack.
- H. Provide non combustible pad under stove.
- I. Four (4) inch L-vent required
- J. Seal vent connections with high temperature silicone sealant.
- K.. Three (3) self tapping sheet metal screws are required to secure each exhaust vent joint.
- L. Mount Exhaust Fan

C Horizontal (not to scale)

- A. Determine stove placement.
- B. Locate wall vent hole.
- C. Install four (4) inch wall thimble.
- D. Allow 3" clearance to combustibles.
- E. Locate two (2) inch outside air hole.
- F. Locate exhaust fan power cable hole.
- G. Maintain five (5) foot clearance from doors, windows, trees, shrubs, and allow for snow pack.
- H. Provide non combustible pad under stove.
- I. Four (4) inch L-vent required
- J. Seal vent connections with high temperature silicone sealant.
- K.. Three (3) self tapping sheet metal screws are required to secure each exhaust vent joint.



D Corner (Not To Scale)



- A. Determine stove placement.
- B. Locate ceiling vent hole.
- C. Install four (4) inch ceiling thimble.
- D. Allow 3" clearance to combustibles.
- E. Locate two (2) inch outside air hole.
- F. Locate exhaust fan power cable hole.
- G. Maintain five (5) foot clearance from doors, windows, trees, shrubs, and allow for snow pack.
- H. Provide non combustible pad under stove.
- I. Four (4) inch L-vent required
- J. Seal vent connections with high temperature silicone.
- K. Three (3) self tapping sheet metal screws, are required for each exhaust vent joint

A

E

Exterior Exhaust Fan

PLEASE READ THIS ENTIRE MANUAL BEFORE USE OF THIS PELLET-FUEL BURNING ROOM HEATER. FAILURE TO FOLLOW THESE INSTRUCTIONS COULD RESULT IN PROPERTY DAMAGE, BODILY INJURY OR EVEN DEATH.

1

Install the stove exhaust system as you would a standard installation. Torrefire External Exhaust Fans are placed at the contiguous end of the exhaust system. Please follow the requirements of your local building code.

1.

NOTE:

Vent connections are sealed using high temperature silicone around each pipe connection. Ensure all vertical sections are supported and all clearances to combustibles comply with most vent manufacturer's specifications.



Follow vent manufacturer's specifications for clearances to combustibles.

Armoured and weatherproof electrical cable from the exhaust fan, through the wall thimble and attach to the stove wiring harness.